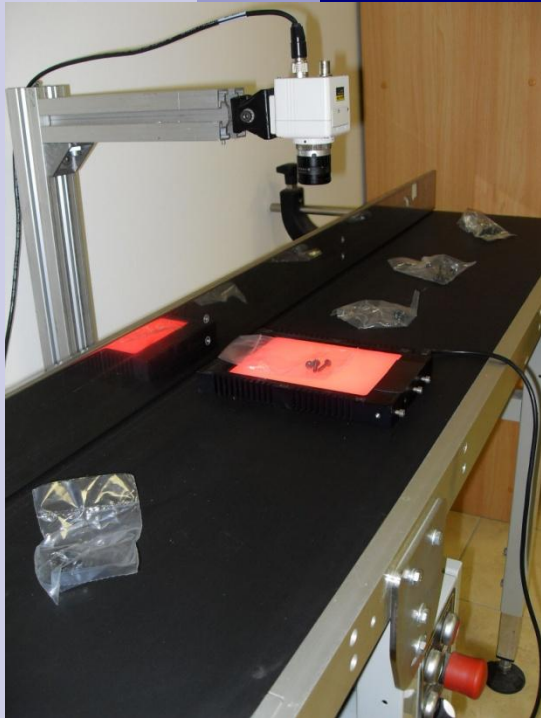


# Technical developments

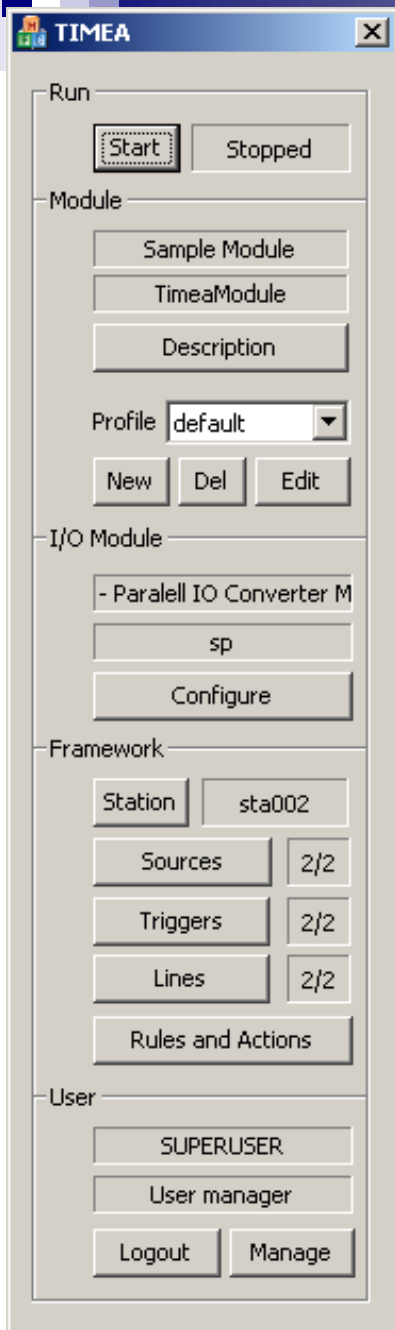


BAROSS\_KD07-  
KD\_INTEG\_07-2008-0061

# Participants

- Modus Számítástechnikai Kft.
- Pannon Egyetem
- CENTRAL EURO-VIDICON Informatikai Kft.
- Sárkány Informatikai Zrt.



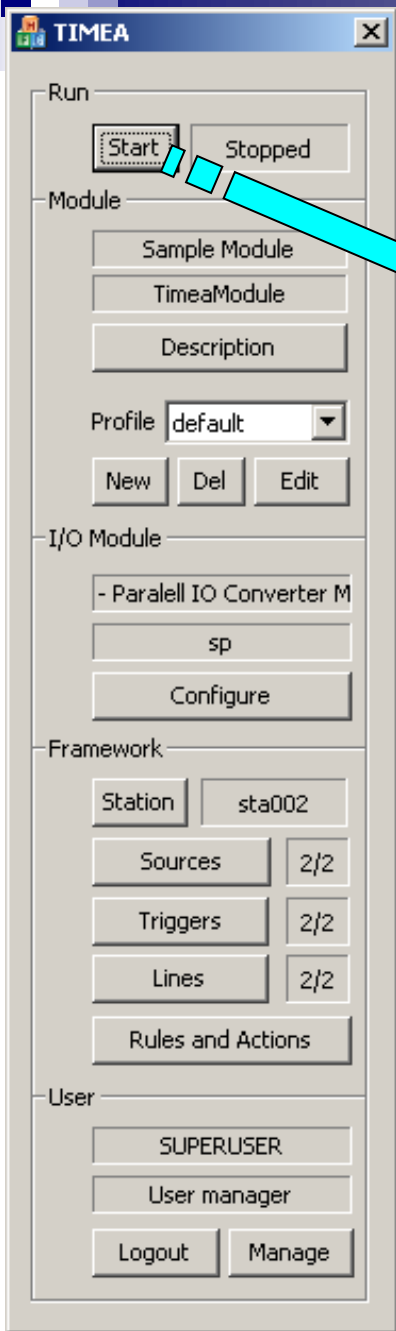


# *The Framework Software*

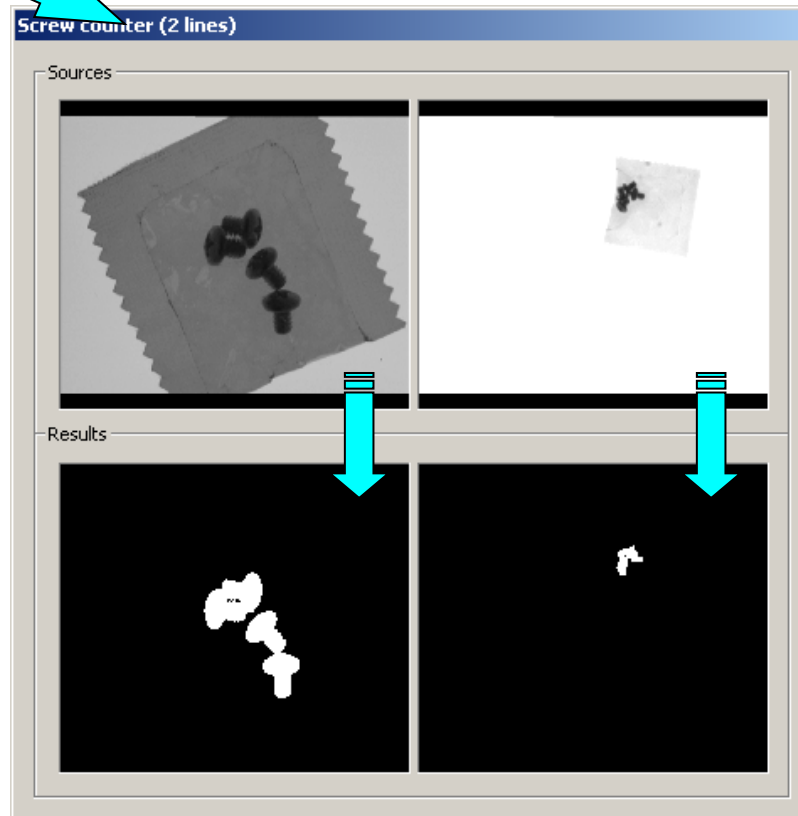
**General purpose framework software to handle common tasks in video inspection scenarios.**

**Main features:**

- ✓ **Measuring module as a plug-in library (dll)**
- ✓ **I/O control module as a plug-in library (dll)**
- ✓ **Multiple processing lines**
- ✓ **Multiple video sources**
- ✓ **Configuration profiles for the measuring module**
- ✓ **User management**
- ✓ **Configurable hardware/software triggers**
- ✓ **Configurable output actions**
- ✓ **Detailed data logging**



# Example module: Screw Counter



## Operator GUI

- ✓ Visible to all users in batch mode.
- ✓ Input images.
- ✓ Segmented images (detected screws with white).

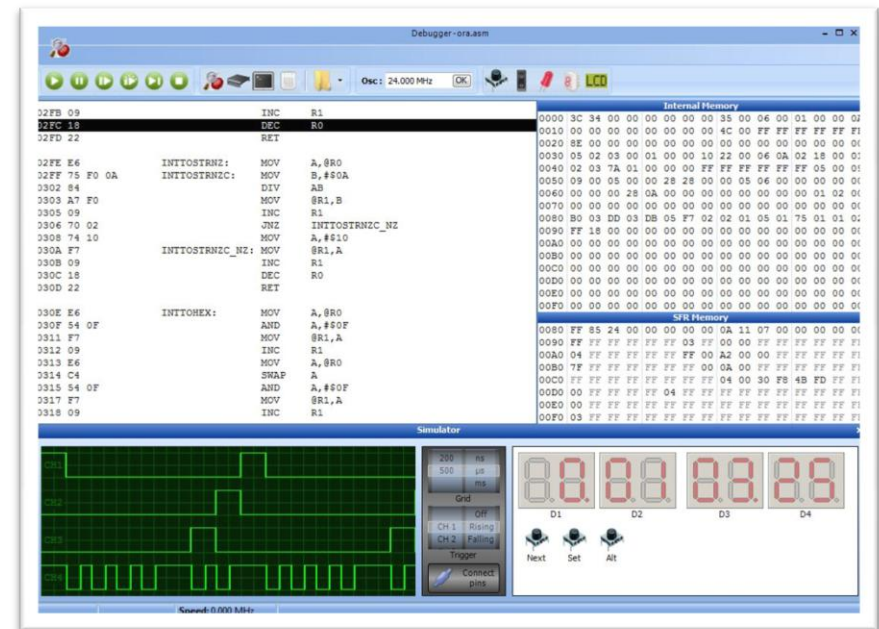
**Note the different lighting conditions – the segmentation algorithm can handle the variation as long as some basic criteria are satisfied.**

# Microcontroller emulator

The developed emulator is designed for the Atmel 89x series.

Its main components:

- editor,
- compiler,
- error locator,
- simulator.

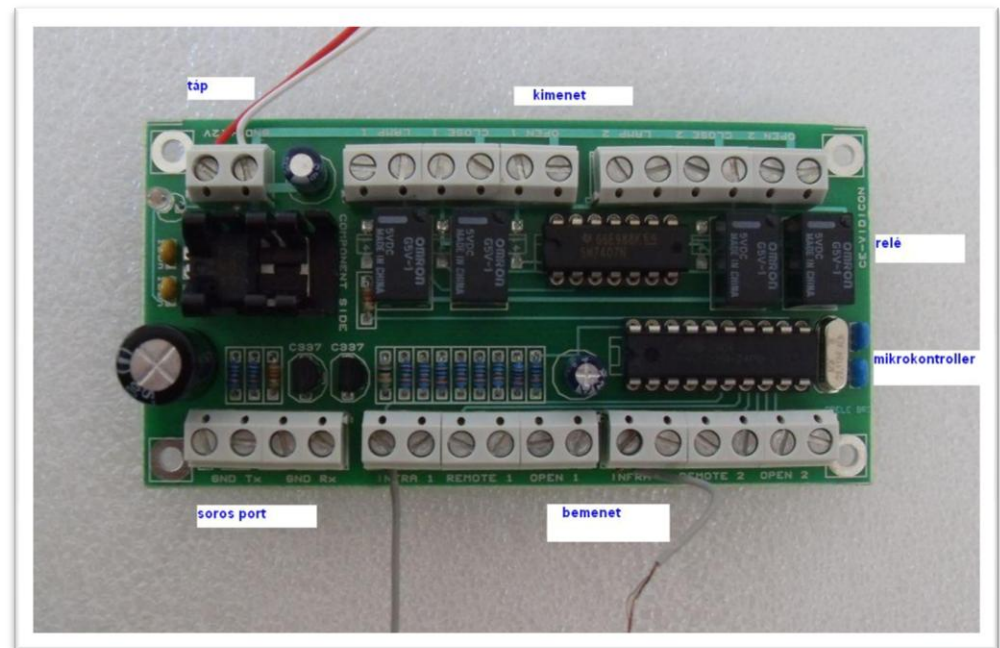


The application of the emulator reduces development time and cost.

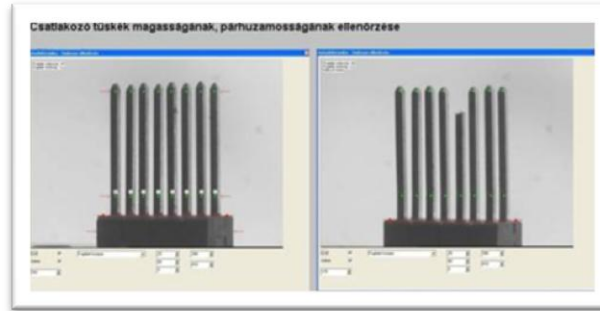
# Interface card for peripheral devices

- The interface card connects to the serial port of the PC and is able to communicate with different controlling hardware.

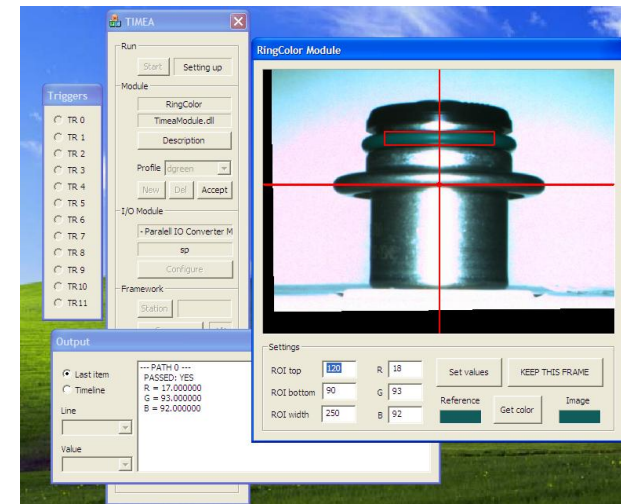
It has 8 output and 8 input channels.



# Quality measurements methods



- Object shape recognition
- Color based recognition
- Checking of perforation

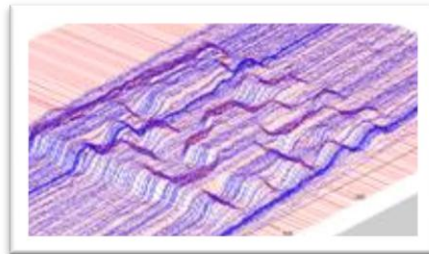


# Laser surface-scanning

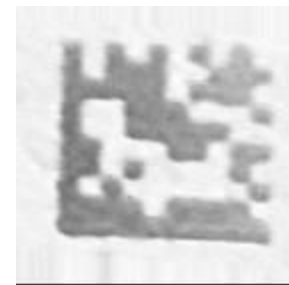
- Object surface may have quality defects.
- 2D cameras are unable to monitor several kinds of 3D surface errors, shape deformations, scratches.
- Laser scanning can give 3D information about scratches or shape defects.



Laser scanning with lines



3D model

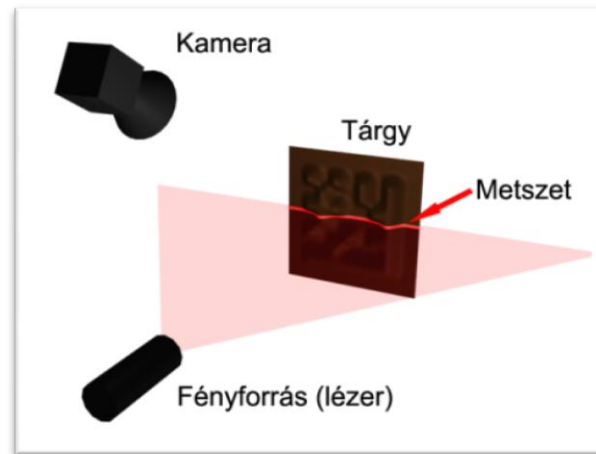


Reconstructed 2D MatrixCode pattern



# Laser surface-scanning

- Overview



- Animation

